



# WDG Healthy Communities Partnership Communiqué

## INSIDE THIS ISSUE:

Local Policy Project Updates	
Road Safety Networking	2
Community Survey	2
Funding Hold-Up	3
Getting Involved	3
Community Picture	4
Golden Nugget	4

### Our purpose:

To help our community foster and develop policies that make the healthy choice, the easier choice.

## Local Policy Project Updates

Since our last newsletter in June, we've been busy supporting local collaborations and partnerships with their policy focused projects. Highlights include:

### Affordable Access to Recreation Workshop

Recently, *Guelph in motion* hosted a workshop on *Affordable Access to Recreation* facilitated by Parks and Recreation Ontario. The workshop included facilitated dialogue about policy options and sharing of current practices to reduce financial barriers to physical activity in Guelph and Wellington County.

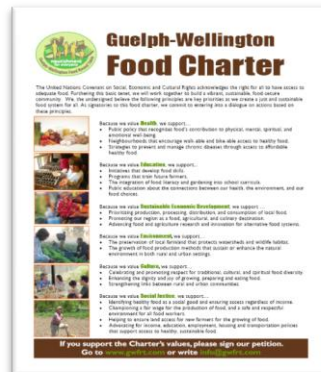
Some attendees at the workshop were: Wellington County, the City of Guelph, private businesses, and health and social services organizations. *Guelph in motion* is working on next steps to move the agenda forward across the region. For more information or to get involved, contact:

Karen Armstrong  
1-800-265-7293 ext. 2655  
[karen.armstrong@wdgpublichealth.ca](mailto:karen.armstrong@wdgpublichealth.ca)

### Access to Healthy Food

The Guelph-Wellington Food Roundtable (GWFRT) continues to work on marketing and obtaining support for their Food Charter. The GWFRT policy working group has been meeting with community organizations, including the Guelph Community Health Centre and the City of Guelph, to endorse and champion the charter. The focus for the next few months is getting more endorsements and ongoing dialogue about healthy eating and sustainable food systems in Guelph-Wellington.

For more information about the *Food Charter* and how you can endorse it, visit: [www.gwfrt.com](http://www.gwfrt.com)



## Road Safety Networking Event



In September, 34 community stakeholders from various sectors attended a *Road Safety Networking Event* at the Clair Road Emergency Services Centre in Guelph. The purpose of the event was to network, share information, and assess interest in a future road safety collaboration.

Deputy Chief Bryan Larkin of Guelph Police Service provided the keynote presentation about the importance of working in partnership on prevention initiatives to make our roads safer.

Liz Robson, Health Promotion Specialist at Wellington-Dufferin-Guelph Public Health presented the findings from the 2011 Road Safety Community Survey and highlighted how passionate many residents are about the issue of road safety.

Feedback from participants was positive, most indicating they learned something new about road safety.

If you're interested in learning more or want to get involved, contact:

Liz Robson

1-800-265-7293 ext. 4655  
[liz.robson@wdgpublichealth.ca](mailto:liz.robson@wdgpublichealth.ca)

## Community Health Priority Survey

### Coming to your community in early 2012!

A community survey in early 2012 will validate community priorities set by organizational partners at healthy communities' consultations last December and January. More information about the priorities can be found [here](#).

The community survey will allow the WDG HCP to identify the general community's top priorities and suggestions for action within six defined priority

areas:

- physical activity
- sport and recreation
- injury prevention
- healthy eating
- tobacco use and exposure
- substance and alcohol misuse
- mental health promotion

The survey will be available electronically and in paper copy.

More information will be arriving to your inbox in the new year.

### For more information contact:

**Alicja Kennedy**  
 Healthy Communities  
 Partnership Coordinator

1-800-265-7293 ext. 4610  
[alicia.kennedy@wdgpublichealth.ca](mailto:alicia.kennedy@wdgpublichealth.ca)

## Funding Hold-Up

Do you wonder why you haven't heard from the WDG HCP in a while?

The Ministry of Health and Long-Term Care is currently reviewing submitted operational plans. Funding decisions will be made shortly.

Due to the lack of funding available late summer and early fall, we have slowed progress on some plans mentioned in the last [Communiqué](#):

- WDG HCP organizational structure and

partnership development

- capacity building workshops
- community picture report launch
- supporting the Headwaters food initiative

On a positive note, support from Wellington-Dufferin-Guelph Public Health has allowed us to move forward on many of our goals this fall including:

- *Road Safety Networking Event* (page 2)
- supporting the Guelph Wellington

Food Charter launch (page 1)

- supporting the *Affordable Access to Recreation Workshop* (page 1)
- making improvements to *Community Picture Report* (page 4)
- *Policy Workshop*
- *Community Health Priority Survey* (page 2)

### **WDG Healthy Communities Partnership is now a project under the Ministry of Health and Long-Term Care!**

Due to the provincial election and the subsequent cabinet shuffle, the WDG HCP formerly a project of the Ministry of Health Promotion and Sport is now a project under the Ministry of Health and Long-Term Care.

## It's not too late to get involved!

We're always looking for community partners interested in getting involved with the WDG HCP.

There are many ways to get involved with various levels of commitment. Current opportunities include:

- partnership table
- planning a capacity building workshop
- connecting with local policy projects

For more information, contact:

Alicja Kennedy, Healthy Communities Partnership Coordinator

1-800-265-7293 ext. 4610 [alicja.kennedy@wdgpublichealth.ca](mailto:alicja.kennedy@wdgpublichealth.ca)

### **Know someone who should be reading this newsletter?**

If you know someone who would be interested in reading this newsletter, please forward on. If you don't want to continue receiving it, please let us know.

## Community Picture – Health Status Data

### Missed a WDG Healthy Communities Partnership Communiqué?

Not to worry! Communiqués can be accessed online on the Wellington-Dufferin-Guelph Website under the “resources and publications” heading at the bottom of the homepage or by clicking [here](#).

In the last issue of the WDG HCP [Communiqué](#) we mentioned the development of a *Community Picture Report*. At community consultations, we shared preliminary at-a-glance statistics. Over the last year, we have been compiling, refining, and enhancing health status data for each of the priority areas (physical activity, sport and

recreation, injury prevention, healthy eating, tobacco use and exposure, substance and alcohol misuse, and mental health promotion).

Data collection and analysis includes both qualitative and quantitative data, and reports from the community consultations.

The first of these reports will be released in early 2012.

These reports will paint a picture of the health status of Wellington-Dufferin-Guelph, and help with program and policy priority setting.

## Golden Nugget:

### A New Way to Talk About the Social Determinants of Health

*A New Way to Talk About*  
**THE SOCIAL DETERMINANTS OF HEALTH**

***A New Way to Talk About the Social Determinants of Health*** written by the Robert Wood Johnson Foundation is a result of four years of research and message development around the Social Determinants of Health.

The article shares ways to create more compelling, effective, and persuasive messages that resonate across the political spectrum and a variety of audiences.

*Each Communiqué will include a “Golden Nugget” – a resource, article, or website that will stimulate thought and build capacity.*



**Public Health**

Wellington-Dufferin-Guelph Public Health  
1-800-265-7293 | [www.wdgpUBLICHEALTH.ca](http://www.wdgpUBLICHEALTH.ca)  
[info@wdgpUBLICHEALTH.ca](mailto:info@wdgpUBLICHEALTH.ca)